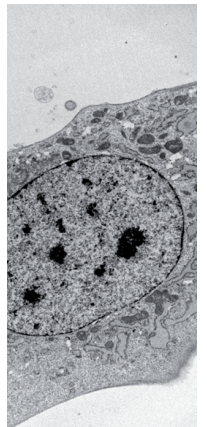


From Eye to Insight



LEICA EM TP Tissue Processor



TISSUE PROCESSOR LEICA EM TP

Fixation and dehydration of samples for EM and LM

The Leica EM TP is an instrument used for fixation and dehydration of samples for further treatment. It can be used for resin processing for electron microscopy (EM) and light microscopy (LM). The Leica EM TP consists of a base unit onto which an EM or LM processing outfit can be added. Interchange between EM or LM processing takes only moments.



- ▶ Simple to use control panel
- ▶ Data storage up to 99 nameable programmes
- ▶ Customisable reagent list
- ▶ Error detection with audible and visible warnings with explanation
- ▶ Start of processing can be delayed
- ▶ Ability of programming while processing
- ▶ Reproducibility, ease of use and a low hazard environment

DISCOVER LEICA EM TP UNIQUE FEATURES

Reagents can be pre-loaded into the vials attached to the carousel in a fume cupboard. Toxic reagents can be sealed with individual vial caps before taking them over to the Leica EM TP. The TP chamber is also ventilated via a fume extraction system.

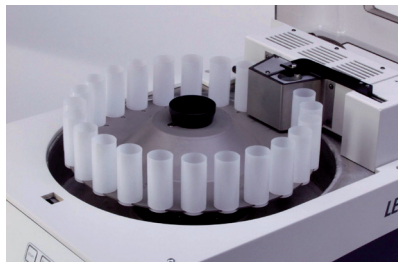
PROCESSING FOR EM AND LM

Independent vial seals for each vial provide a stable environment for each reagent. The vials sit in a carousel designed for both EM and LM vials. To provide a safe environment for the user in case of reagent spillage the processing chamber is closed by a lid. The specimens are supported in various baskets depending upon their size, the mesh varying in accordance with sample size. The baskets are located on an arm which can move vertically up and down to allow agitation when required. The speed of agitation is variable.

For processing at specific temperatures the Leica EM TP has a heater and cooler system allowing temperature control between +4°C and +60°C even during a delayed start or finish. For EM the system also has pre-heat and pre-cool. This means that all reagents coming into contact with the tissue will be at the desired temperature, important for high quality EM processing.

EM Processing

24 polypropylene vials of 20 ml are available to the user for one processing run. The vials are attached to the carousel by a twist fit only. The heater/cooler (H/C) unit flips back allowing direct access of the carousel to the processing area.



Processing of EM samples

LM Processing

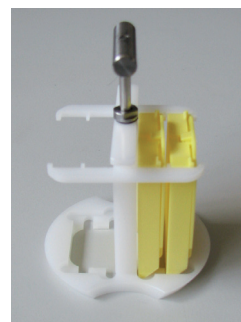
12 vials of 100 ml can be twist fitted to the carousel for processing large samples or high volume of specimens into resin. The Leica EM TP has a holder for standard histology cassettes thus allowing very large specimens such as bone to be decalcified and processed. CellSafe holders can also be used for processing.



Moveable H/C unit for safe and easy access of carousel



Loading plate and consumables



Cassette holder



ISO 9001:2008 No.00805/0
ISO 14001:2004 No.02783/0

Leica Mikrosysteme GmbH | Vienna, Austria
T +43 1 486 8050-0 | F +43 1 486 8050-30

www.leica-microsystems.com

CONNECT
WITH US!

