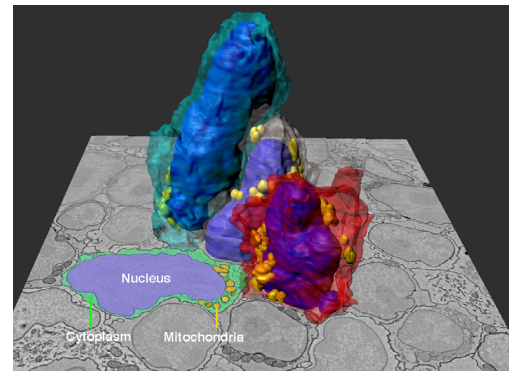
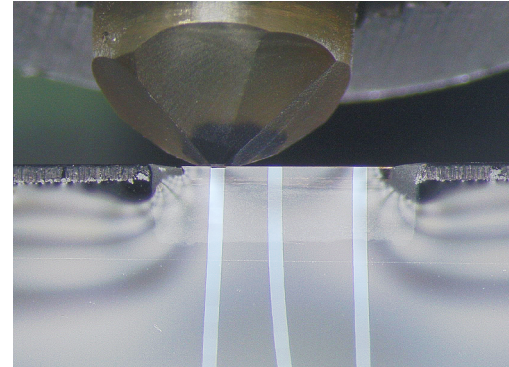


From Eye to Insight

Leica
MICROSYSTEMS



Automatic creation of highly consistent quality serial sections EM UC7-3D ULTRAMICROTOME

- > Ultramicrotome for automated serial sectioning used for subsequent 3D reconstruction
- > Collect a higher density of serial sections for optimized SEM analysis
- > Integrated direct sample transfer preserves section quality
- > The small size of a section carrier fits to every SEM chamber and can be used for CLEM studies too
- > EM UC7 ultramicrotomes are upgradable to EM UC7-3D